



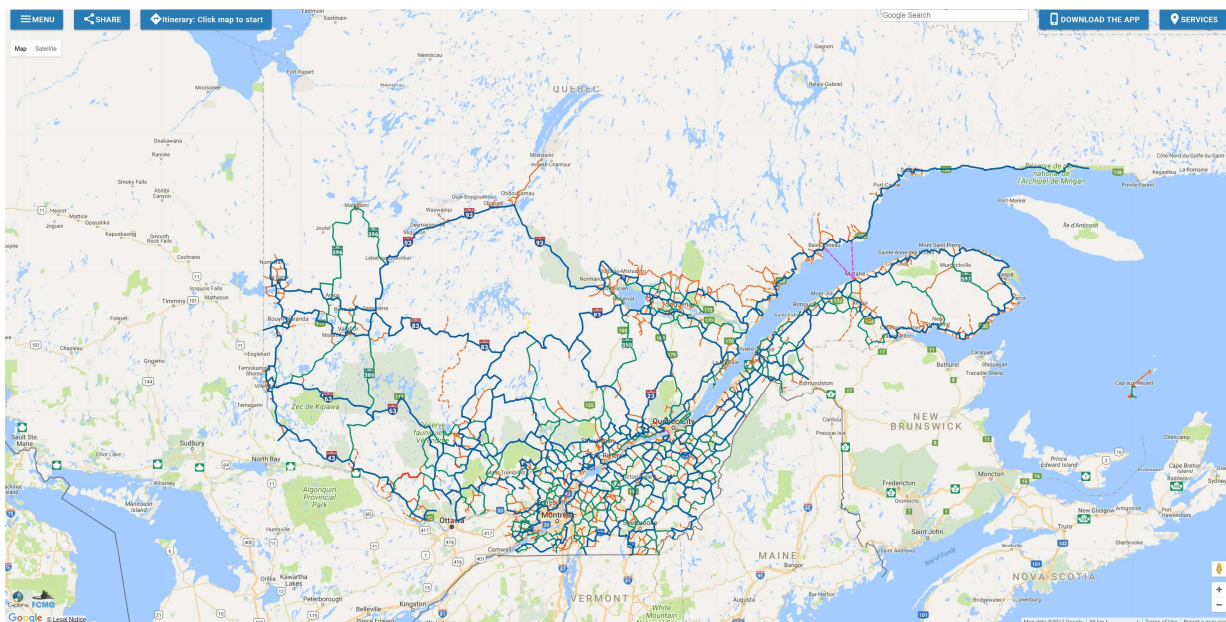
FCMQ

LA FÉDÉRATION DES CLUBS DE
MOTONEIGISTES DU QUÉBEC

Using the FCMQ's snowmobile trail interactive map

Recommended browsers: Google Chrome, Mozilla Firefox or Internet Explorer 10 or newer.

The interactive map is compatible with any type of mobile device (iPhone, iPad and Android).



Information about the services available on the snowmobile trail interactive map

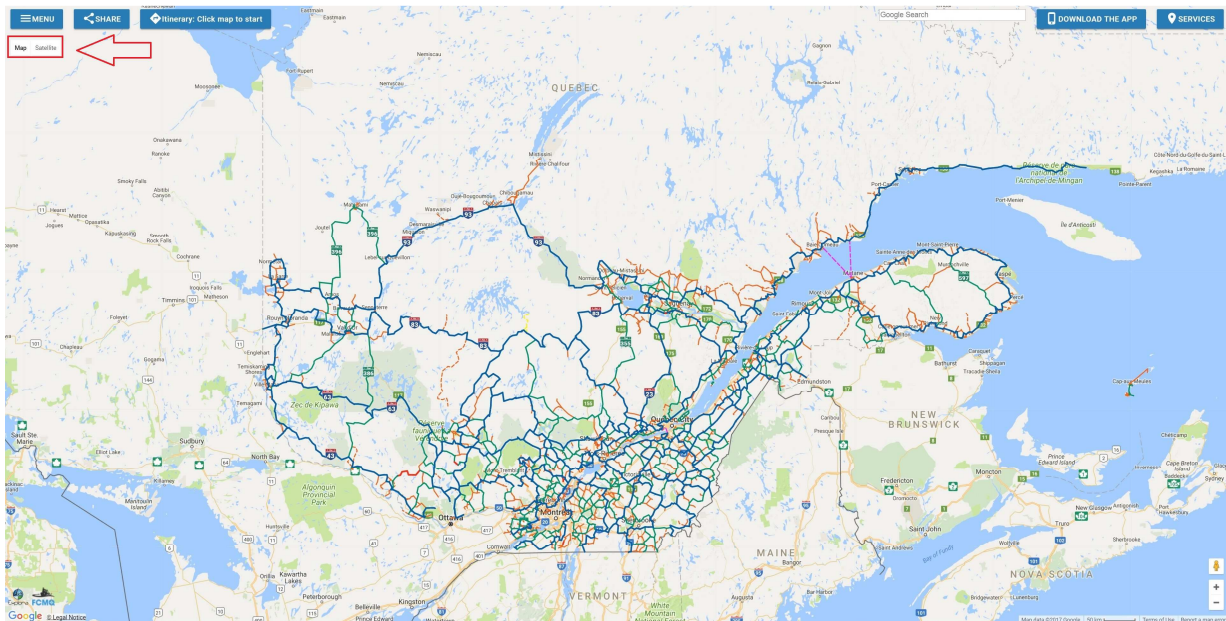
The FCMQ displays on the interactive map **snowmobile trails as well as services** (dealerships, businesses,...) which are enrolled in the Services Guide.

Options for interactive map

- 1) Basemaps
- 2) Searching cities: « Recherche »
- 3) Type of service and shops: « Services »
- 4) The Weather
- 5) Certified trails (écoSentiers)
- 6) Grooming Delay
- 7) Create and share an itinerary
- 8) The « Menu »

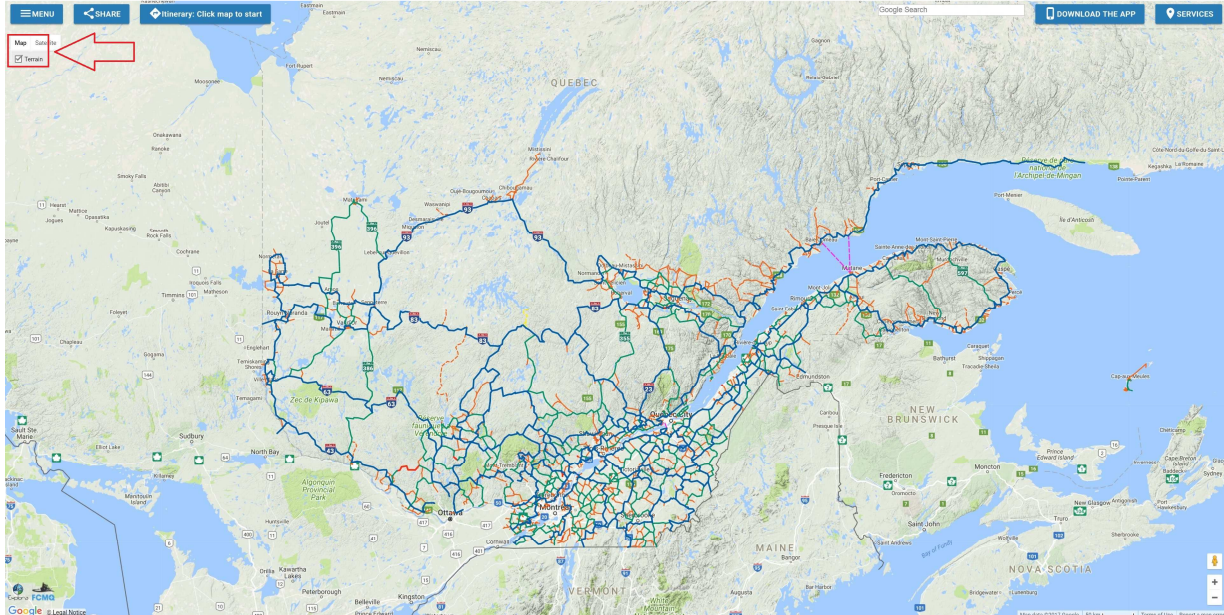
1) Basemaps

By clicking on the tab « **Map / Satellite** » at the top left we can select different basemaps.



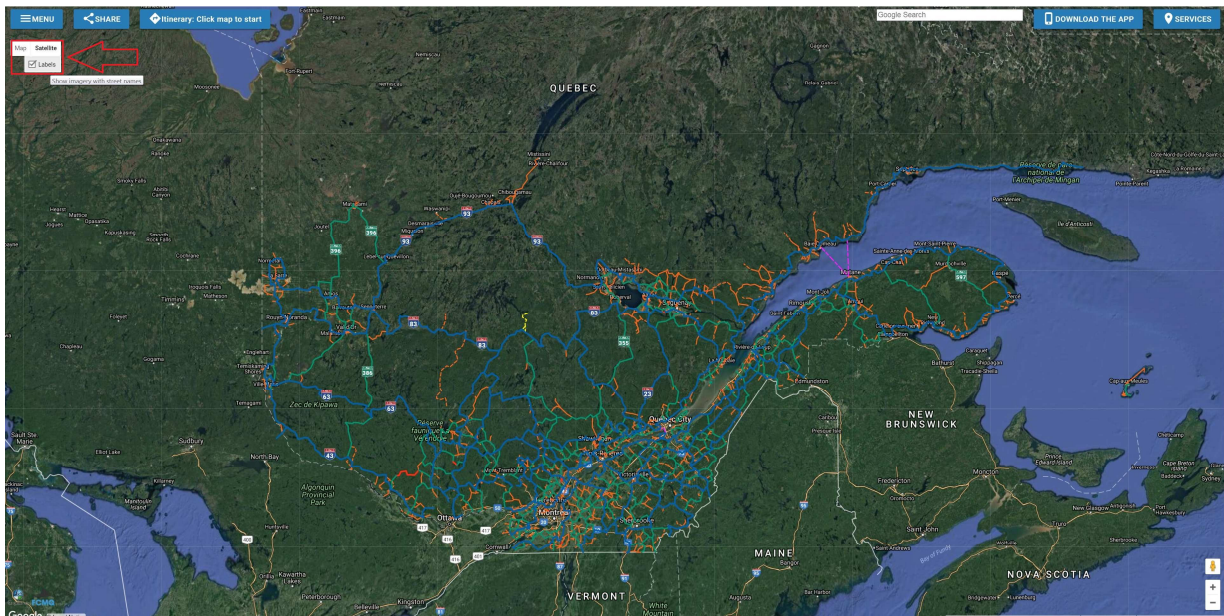
Mapping « Google with or without terrain»: By approaching the mouse cursor on the tab « **Map** », we can see a new tab « **Terrain** ».

Click on the white square near the word « **Terrain** » to see the new basemap.



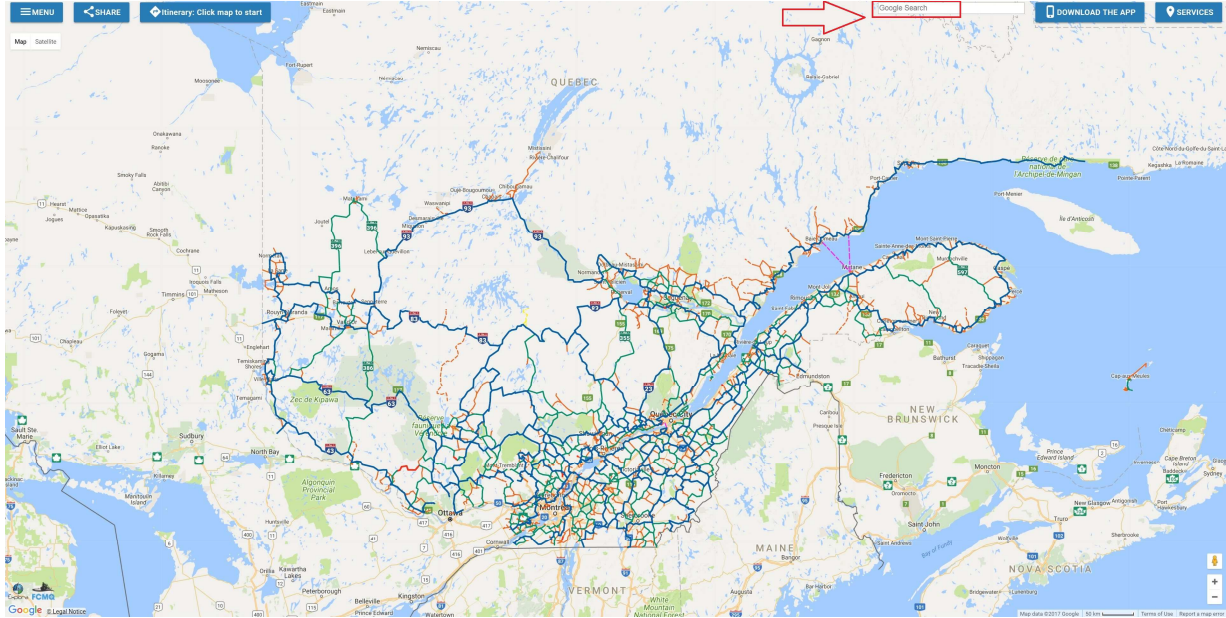
Mapping « satellite with or without label »: By clicking on the tab « **Satellite** », we can see a satellite basemap.

Click on the white square near the word « **Labels** » to make all information except the snowmobile trails disappear.

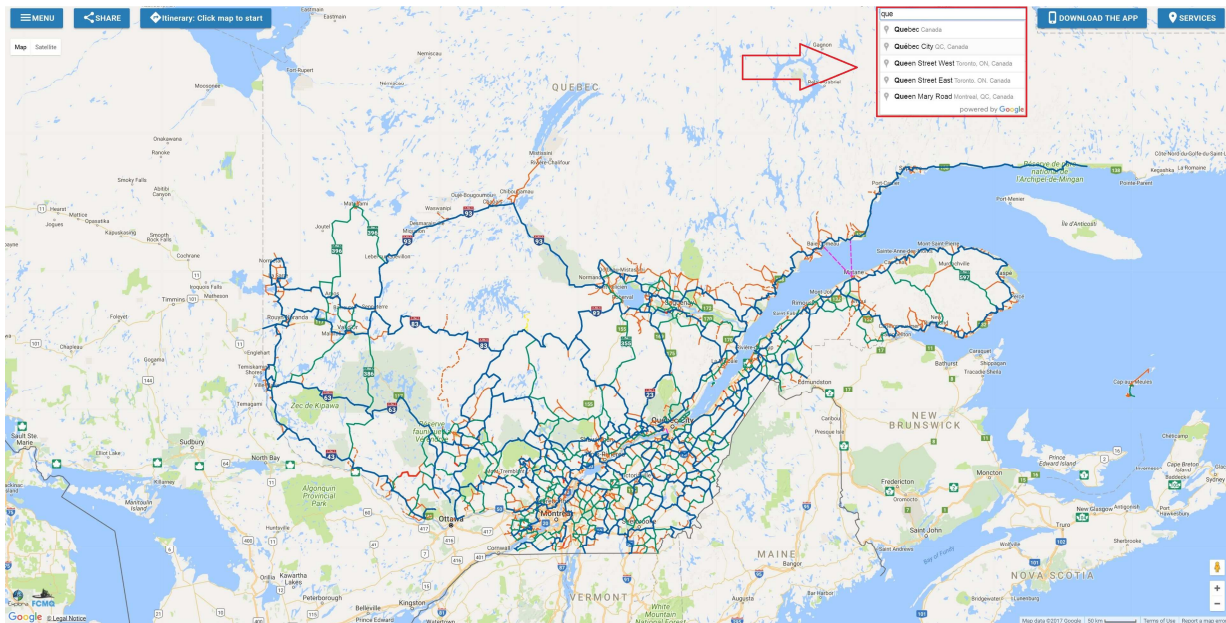


2) Searching towns: « Google Search »

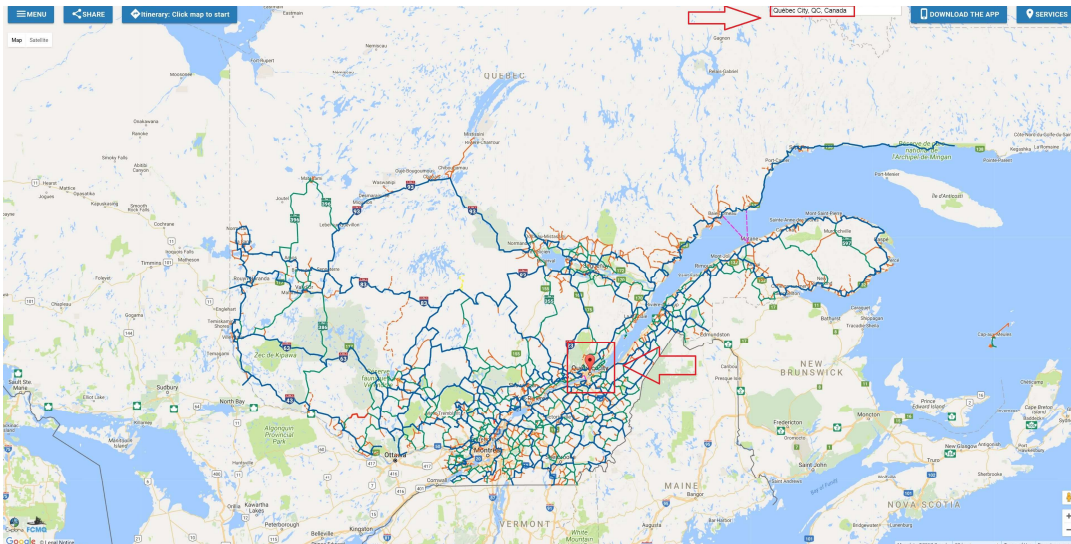
The tab « **Google Search** », at the top right, is available for locating a town.



Write the first letters of the desired town.



Select in the selection menu of towns, the one that you want to find. A red marker will show the desired town.

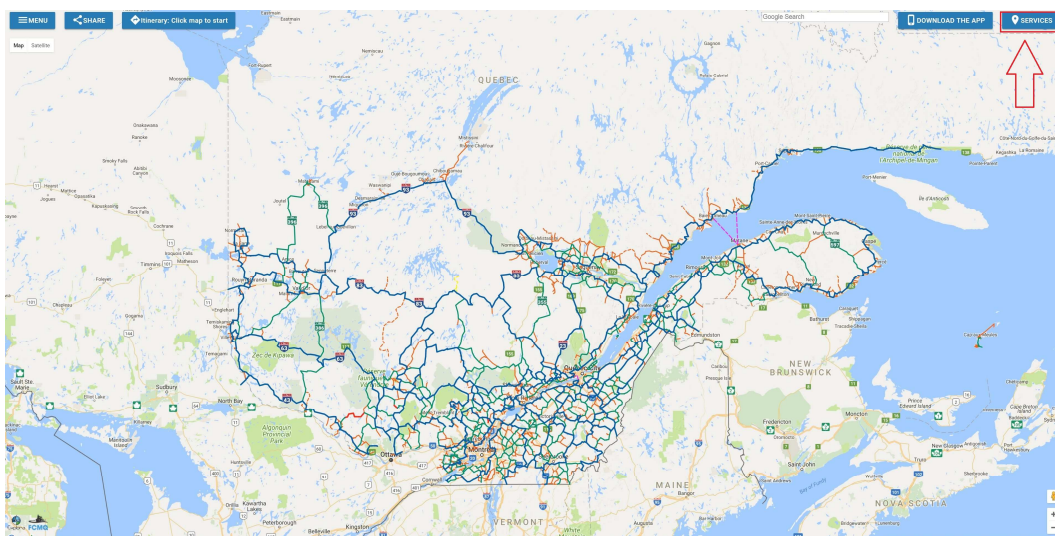


Important

If you write directly the name of the town without choosing one in the drop down menu, you will not see the location of the town on the map.

3) Type of service and shops: « Services »

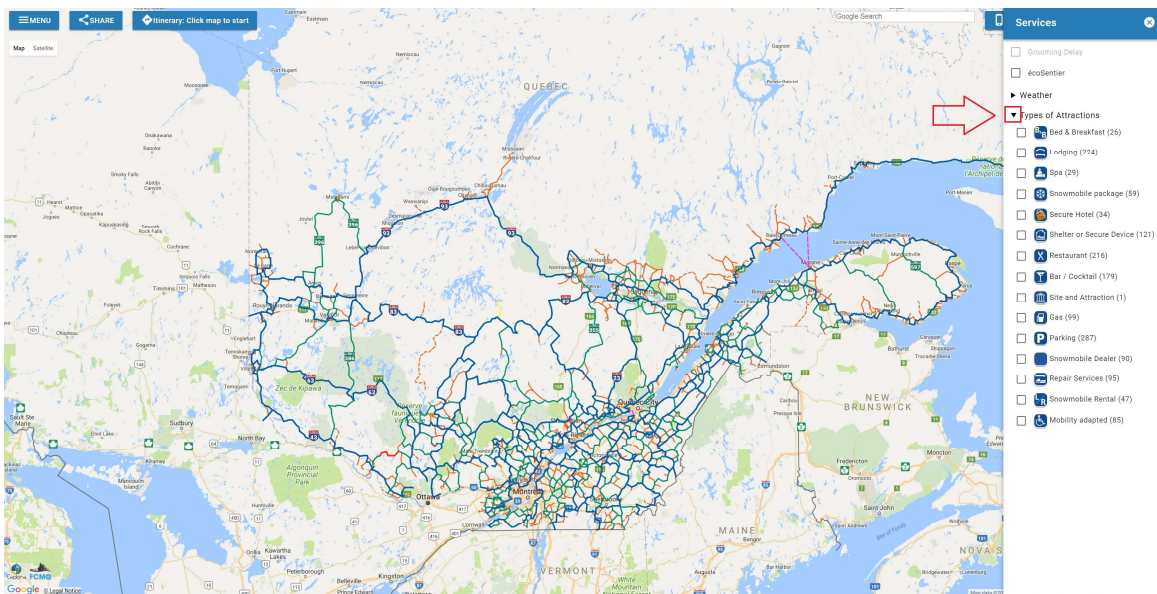
By clicking on the tab « **Services** », at the top right, we can see the different services that can be viewed on the interactive map.



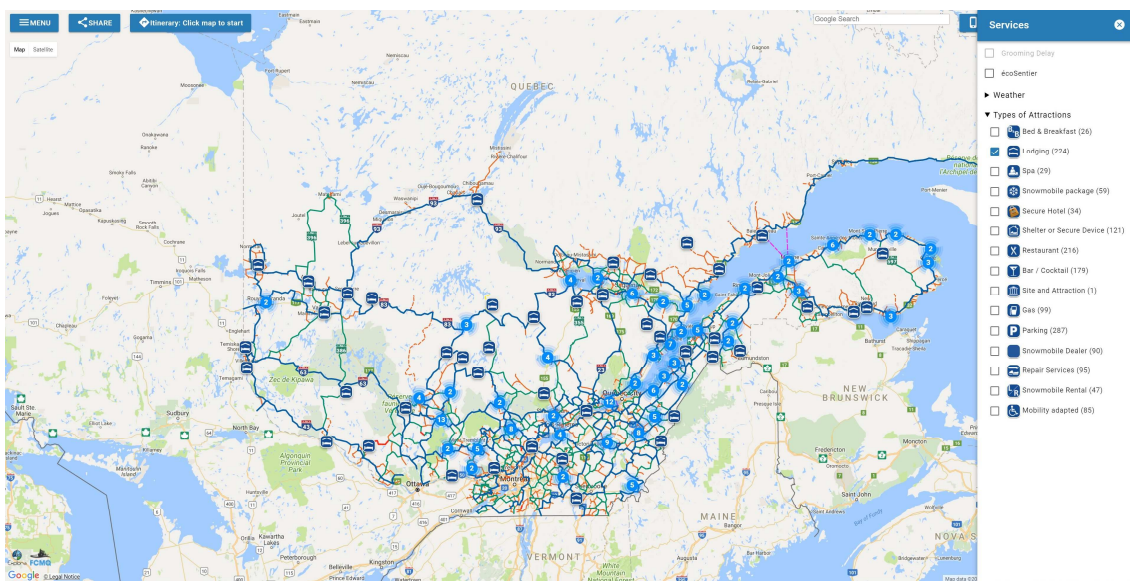
Click on the little arrow near of « **Display on map** » and on the type of service that you want in order to make it appear on the screen.

Important

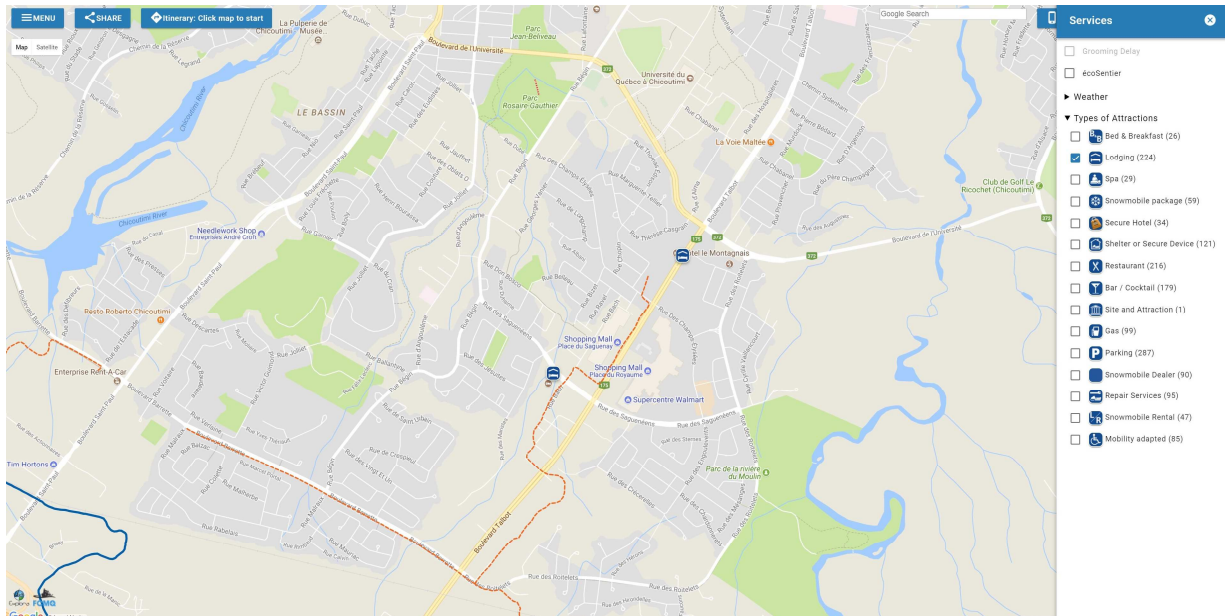
Only the businesses enlisted in the Services guide of the FCMQ appear on the interactive map.



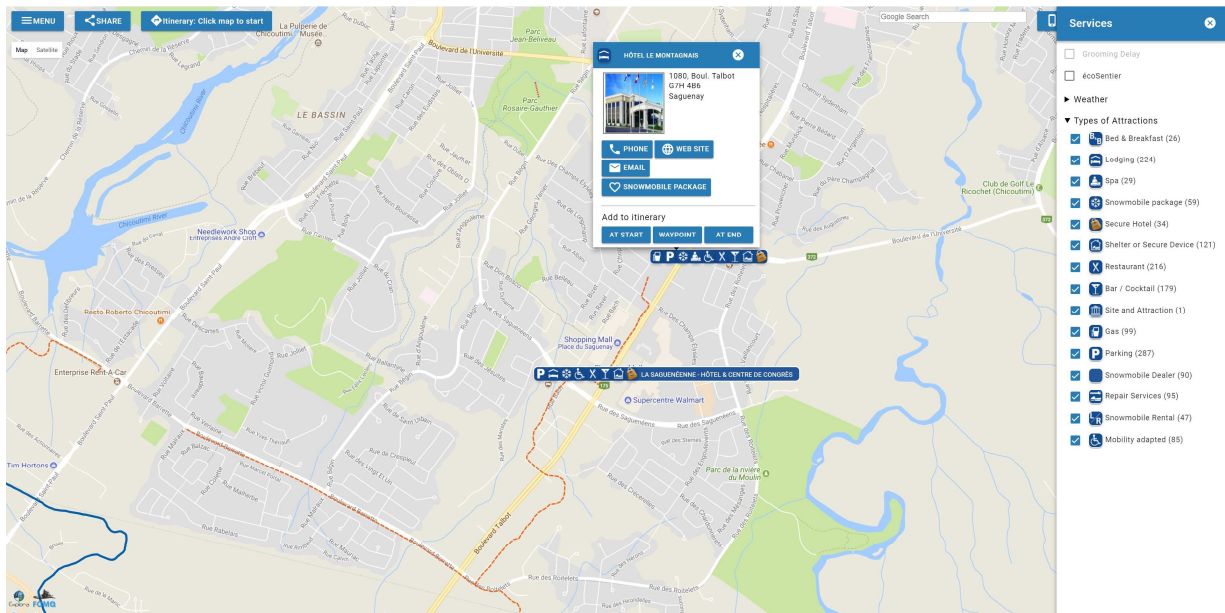
For example, by clicking on « **Lodging** » a visual displaying the location of all lodging registered in the Services guide of the FCMQ in the province of Quebec will appear.



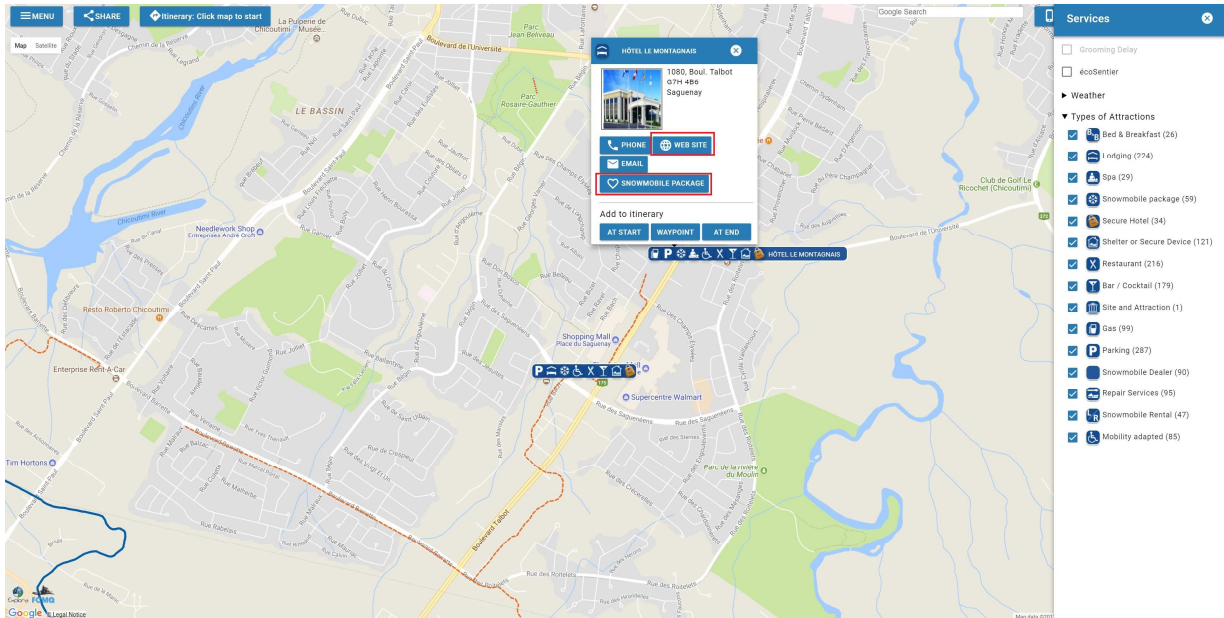
When there are many «Services» or «businesses» in the same location, a blue circle with a number appears. Click on the number to automatically zoom it.



By clicking directly on the **icon of the service** that you are interested in, the information of the establishment appears. If you «check» all the types of services, they will appear on the interactive map.

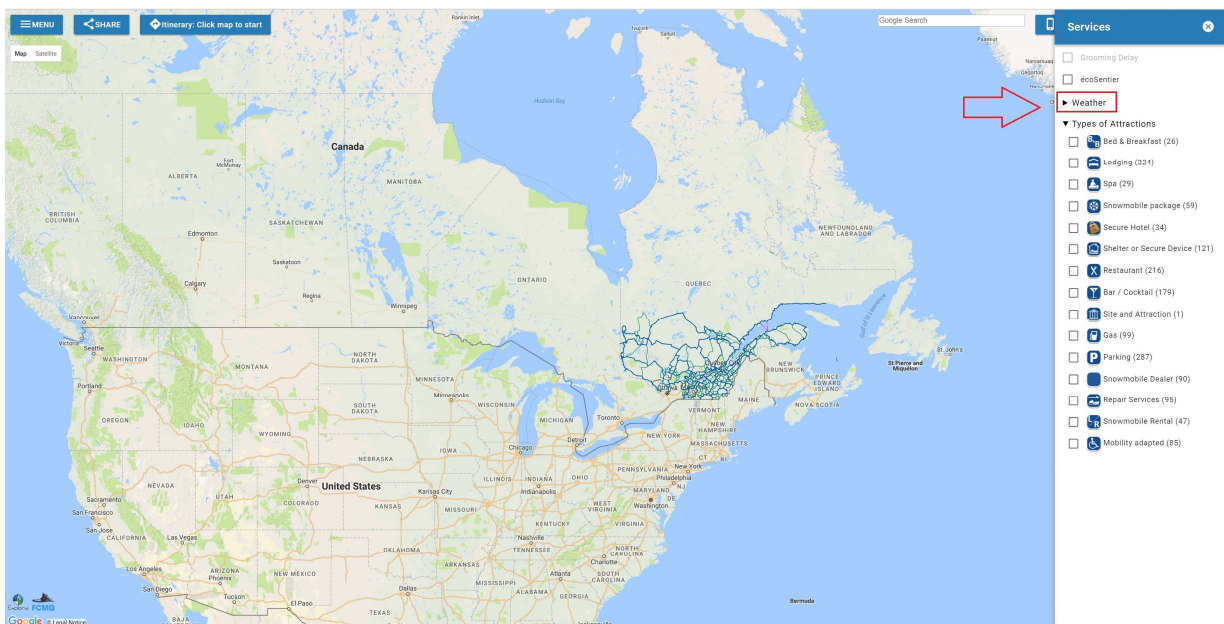


If you click on « **Web Site** » or « **Snowmobile Package** », a new window opens and redirects you to the establishment's Web site.

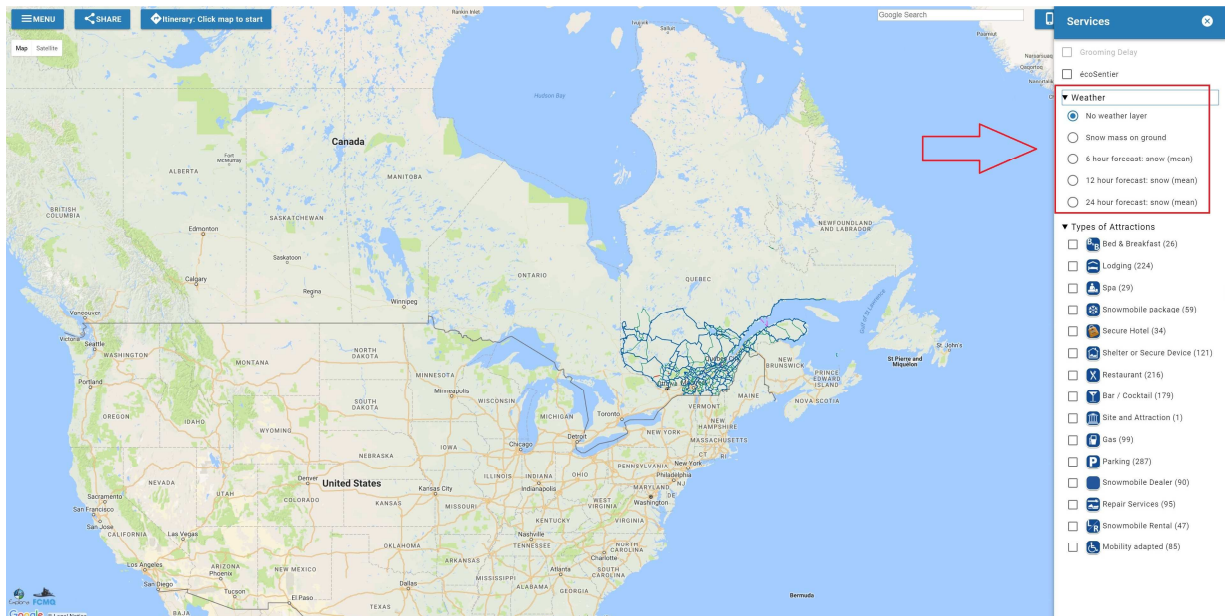


4) The Weather

Clicking on the little arrow near of « **Weather** » to see the weather forecast transmitted by « **Environment Canada** ».

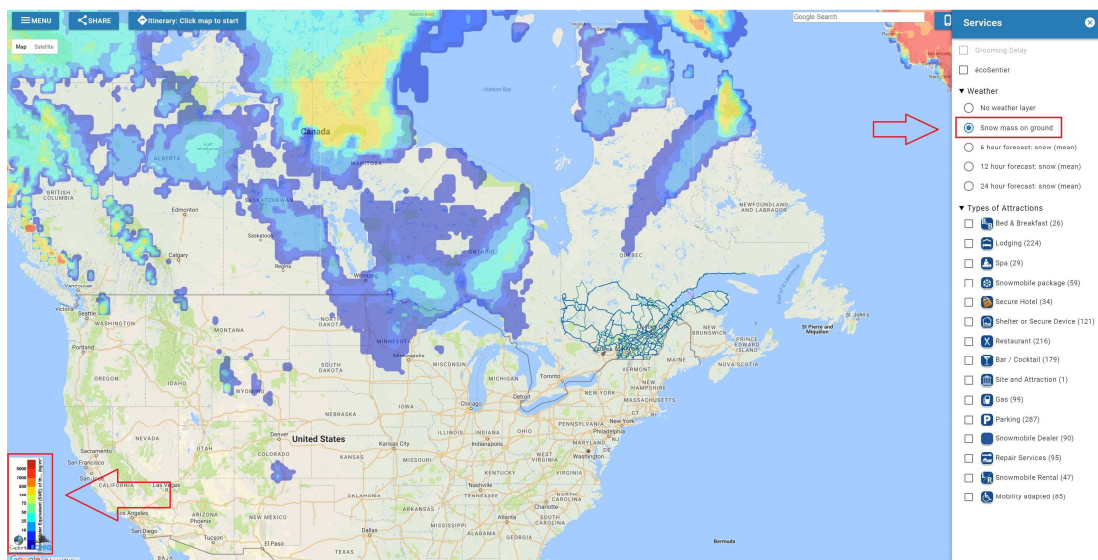


You have access to more information



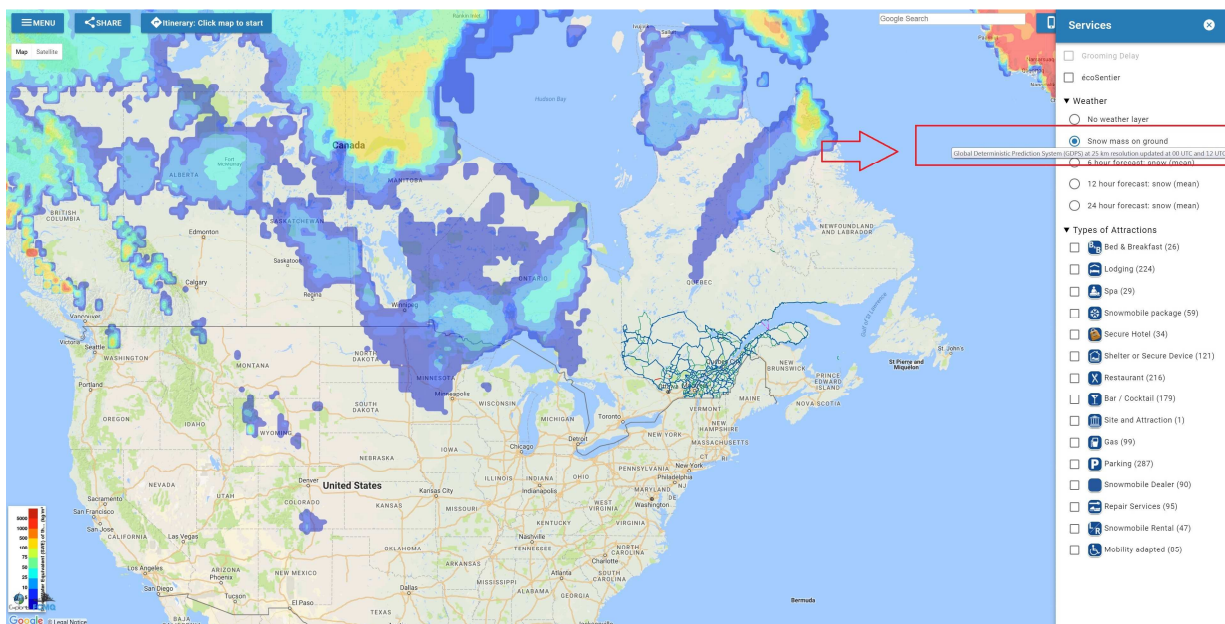
By clicking directly on the **icon of the forecast** that you are interested in, the weather information transmitted by « Environment Canada» will appear on the interactive map.

The **legend** can be seen in the lower left.



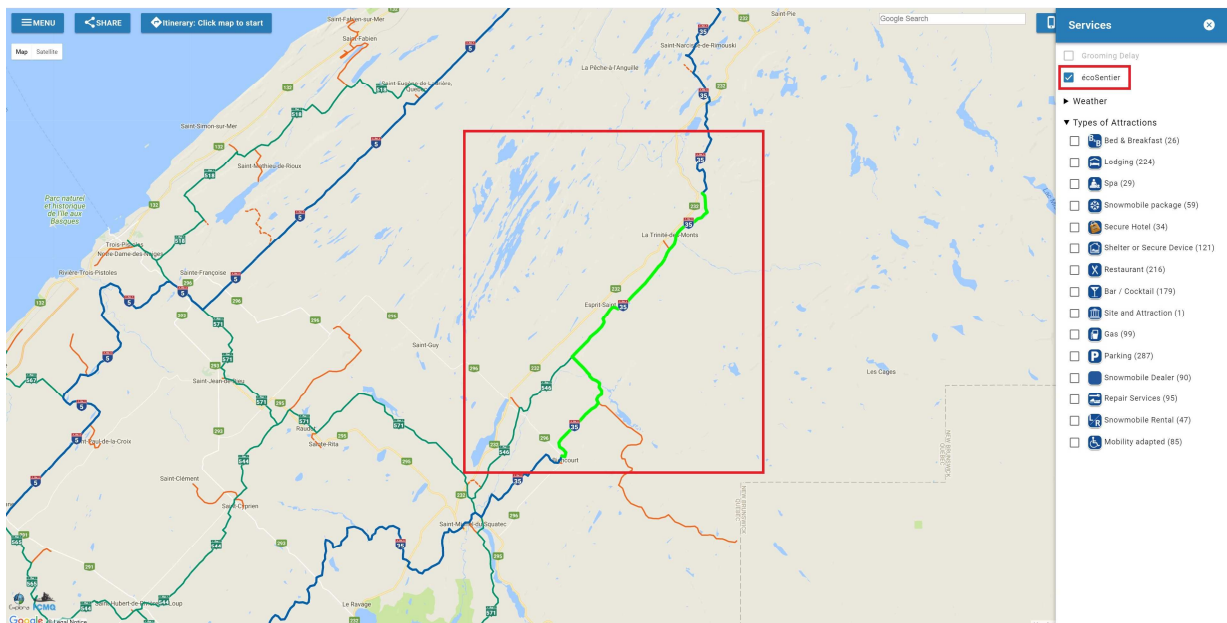
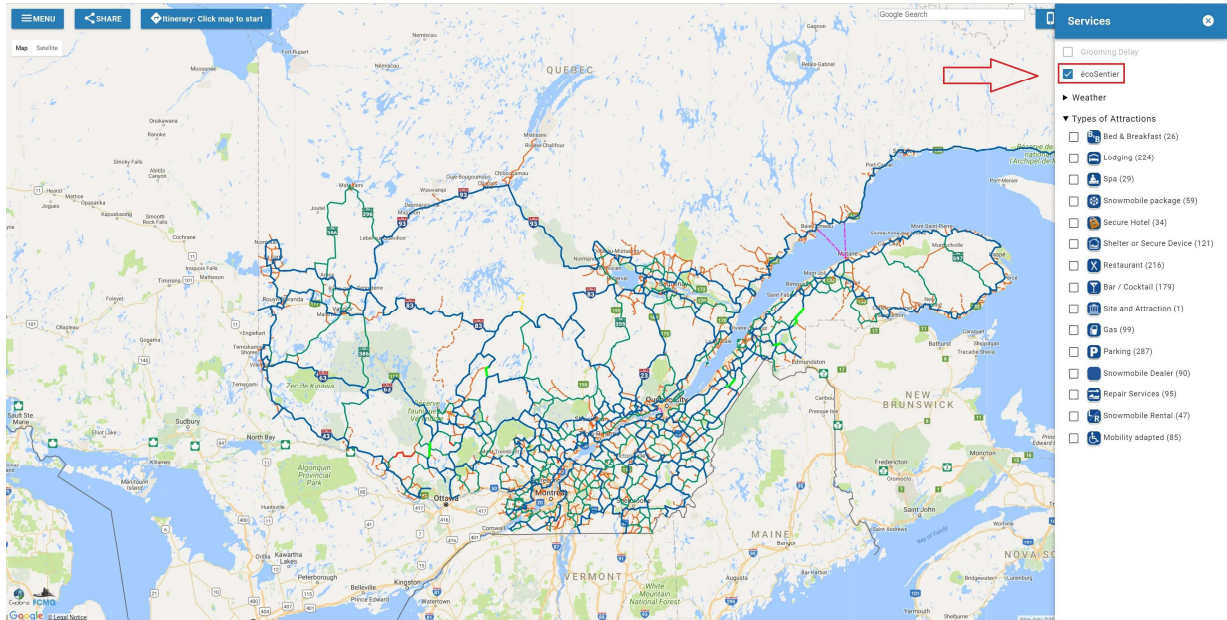
By approaching the mouse cursor on an **icon of the forecast**, you have access to new information about the type of forecast used and the when this information is updated.

1. 6 hour forecast: snow (mean) - Regional Deterministic Prediction System (RDPS) at 10 km resolution over Canada updated at 00UTC, 06UTC, 12UTC and 18UTC.
2. 12 hour forecast: snow (mean) - Regional Ensemble Prediction System (REPS) at 10 km resolution over Canada updated at 00UTC and 12UTC. Snow (QPF : Quantitative Precipitation Forecasts): mean
3. 24 hour forecast: snow (mean) - Regional Ensemble Prediction System (REPS) at 10 km resolution at 24 hour intervals. Snow (QPF : Quantitative Precipitation Forecasts): mean
4. Snow mass on ground - Global Deterministic Prediction System (GDPS) at 25 km resolution updated at 00 UTC and 12 UTC



5) Certified trails (écoSentiers)

By clicking on « écoSentier », you can see the environmentally certified trails (écoSentiers).

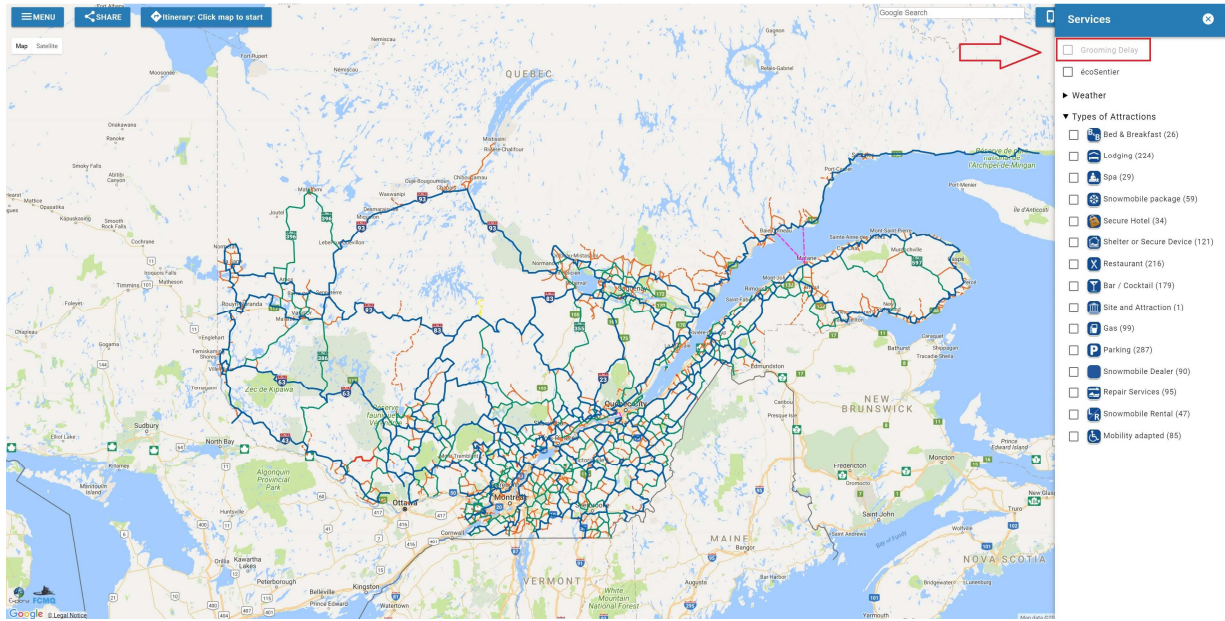


For more information, please refer to the website

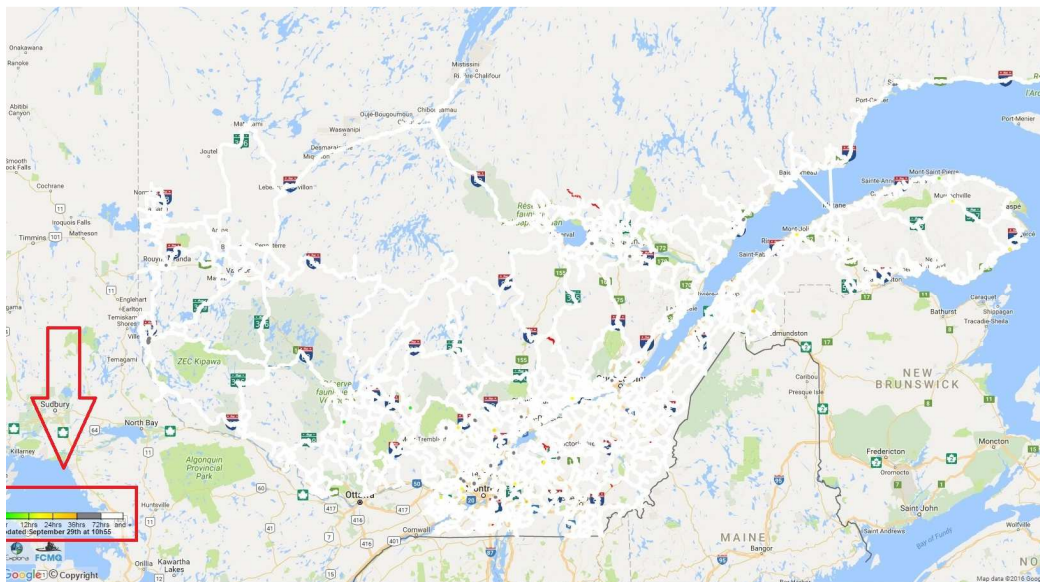
<https://ecosentier.ca/fr>

6) Grooming Delay

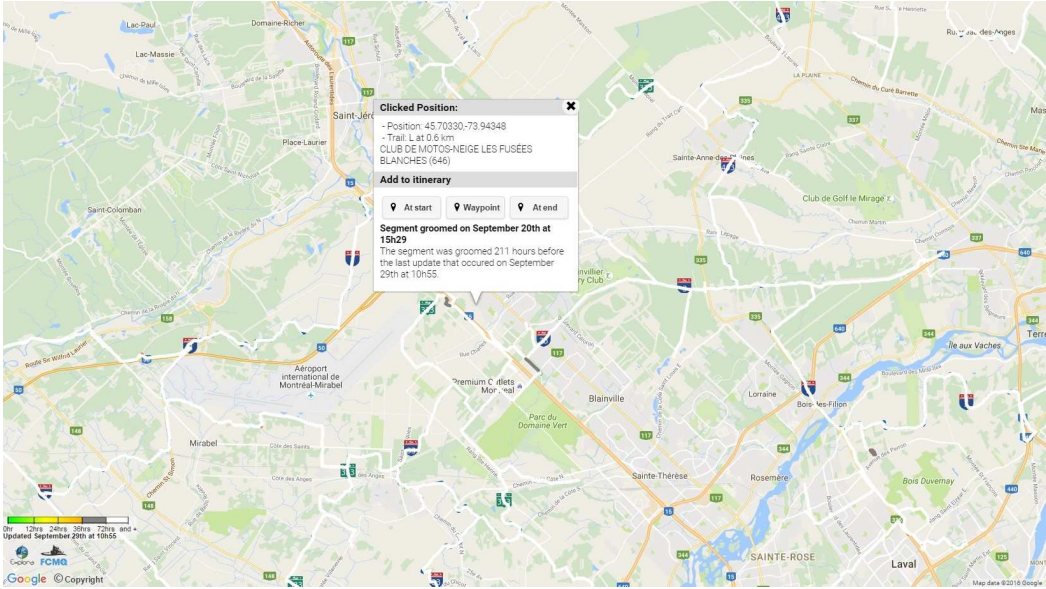
By clicking on the tab « **Grooming Delay** », we can see the time of the most recent grooming activity.



The **legend** of the “Grooming Delay” can be seen in the lower left.

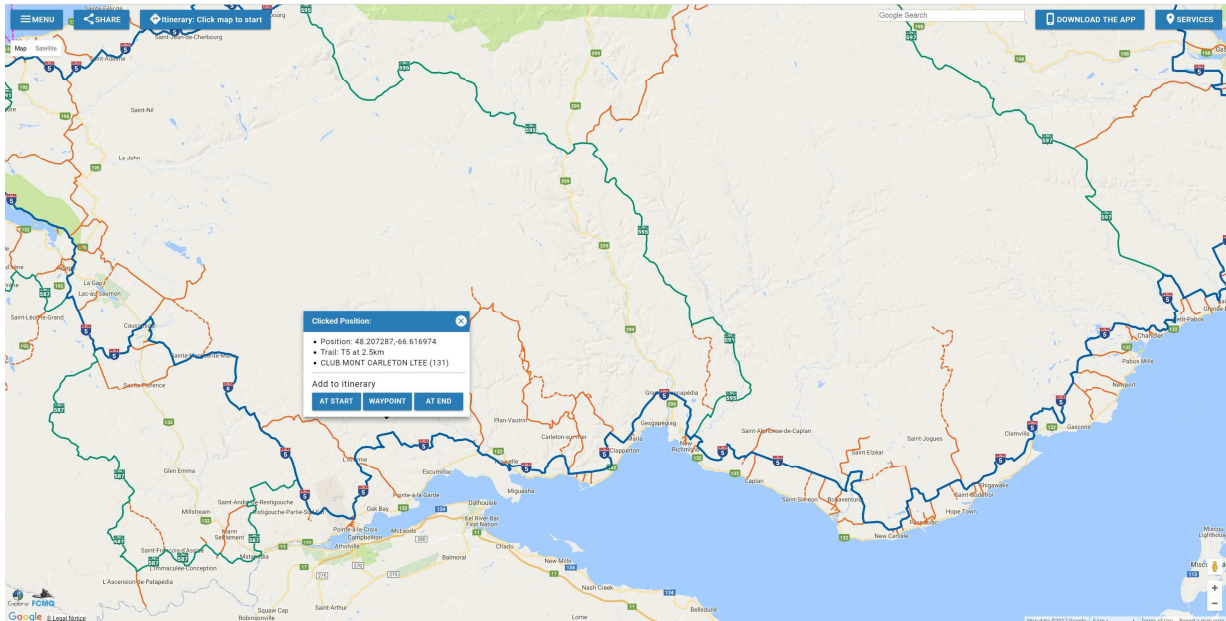


By clicking on a specific trail, you can obtain additional information relating to **the exact date and time of grooming.**



7) Create and share an itinerary

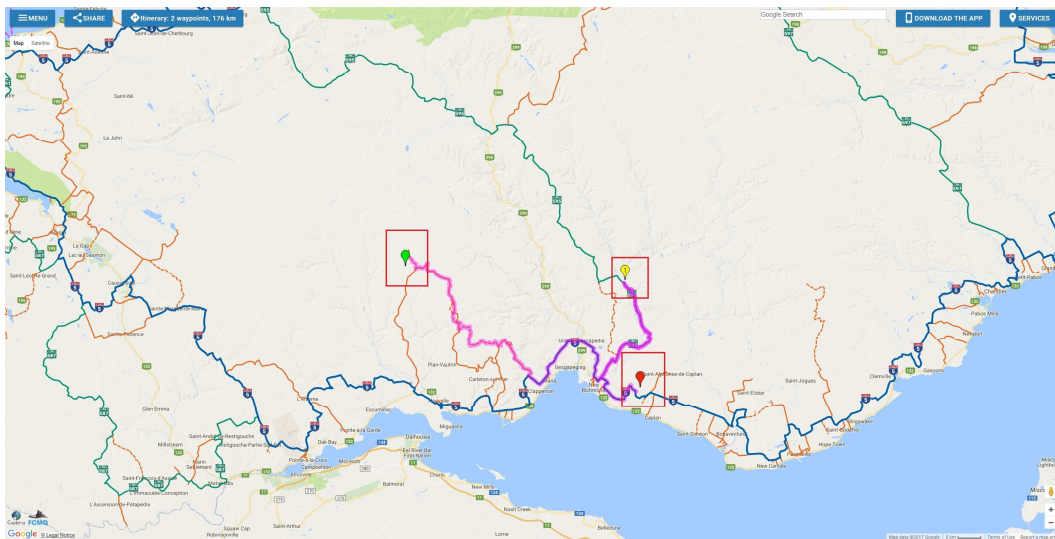
Once you have selected your starting point, simply click on the desired location on the map in order to begin creating your itinerary.



Important

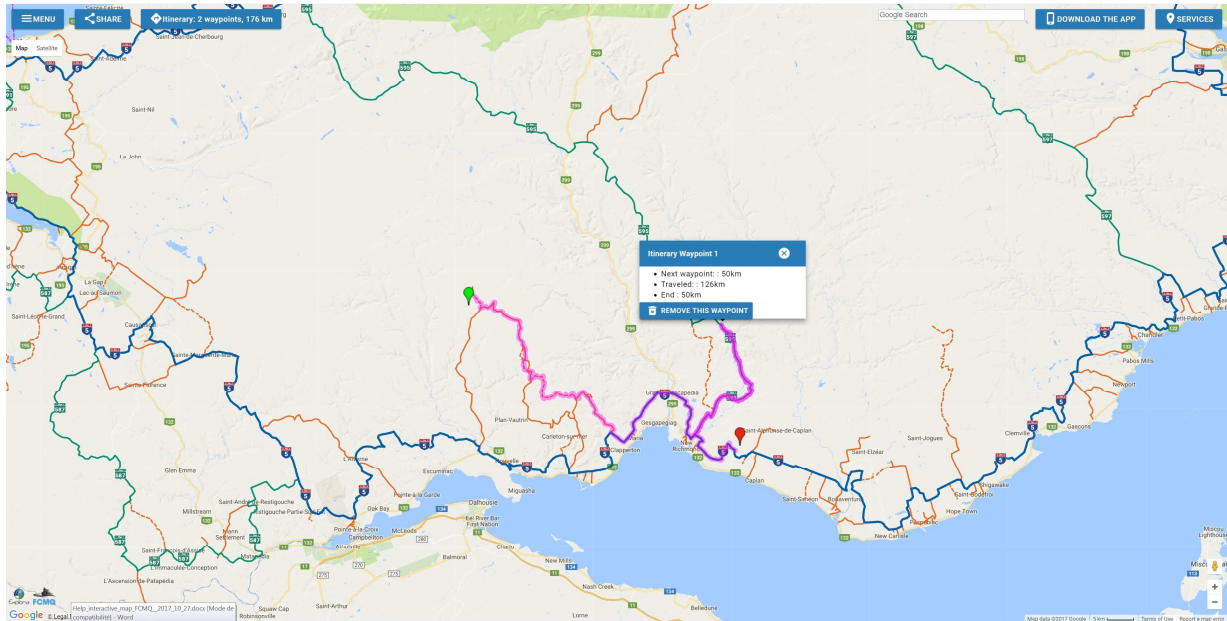
The simplest way to proceed is to choose the departure and the arrival and select the stages afterwards.

If you choose « **At start** », a green marker will appear, if you choose « **Waypoint** », a yellow marker will appear and if you choose « **At end** », a red marker will appear.



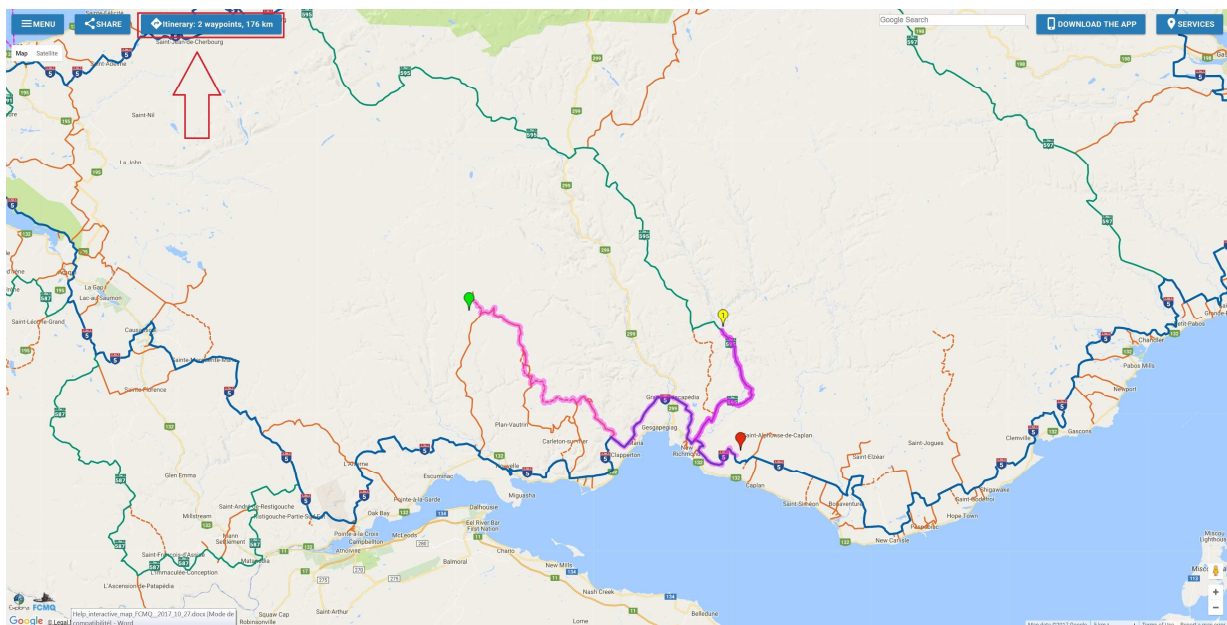
You may subsequently relocate the marker by dragging it and the itinerary will be revised.

To remove a marker, click on it with the left mouse button « **Remove this waypoint** » or, more simply, click on it with the right mouse button.



The proposed route will be coloured in purple and the total mileage will be displayed at the top left of the interactive map: « Itinerary: X waypoint, X km ».

To view the details of the itinerary click on « **Itinerary: X waypoint, X km** ».



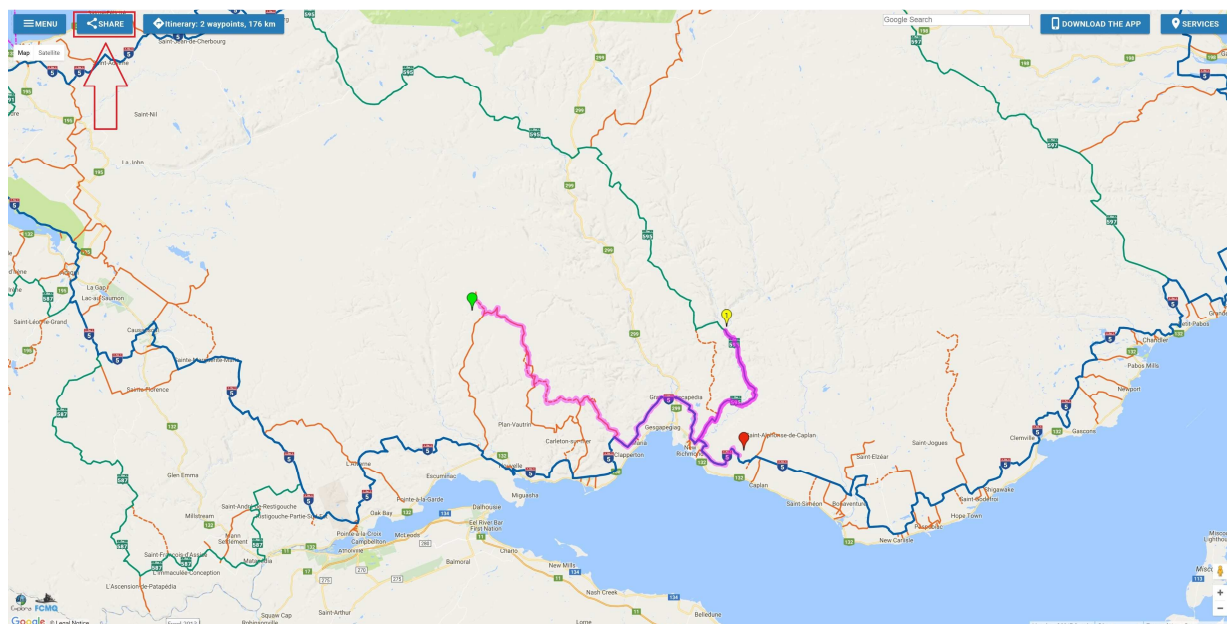
Click on the arrow at the top left to see the details of your chosen route.

Itinerary					← BACK TO MAP
Start	Next waypoint: 125.7 km Remaining: 175.7 km				
	at (km)	take	for	total (km)	
	1 3.1	N	3.1	3.1	
	2 3.1	L	19.1	22.2	
	3 22.2	N	3.0	25.2	
	4 25.2	L	2.6	27.8	
	5 27.8	N	16.0	43.8	
	6 43.8	L	14.5	58.3	
	7 58.3	TS	32.9	91.2	
	8 91.2	R595	34.5	125.7	
Waypoint 1	Next waypoint: 50.0 km Traveled: 125.7 km Remaining: 50.0 km				
	at (km)	take	for	total (km)	
	1 34.5	R595	34.5	34.5	
	2 34.5	TS	15.5	50.0	
End	Traveled: 175.7 km				

To return to the map of your route, click on « **Back to map** ».

Itinerary					← BACK TO MAP
Start	Next waypoint: 125.7 km Remaining: 175.7 km				
	at (km)	take	for	total (km)	
	1 3.1	N	3.1	3.1	
	2 3.1	L	19.1	22.2	
	3 22.2	N	3.0	25.2	
	4 25.2	L	2.6	27.8	
	5 27.8	N	16.0	43.8	
	6 43.8	L	14.5	58.3	
	7 58.3	TS	32.9	91.2	
	8 91.2	R595	34.5	125.7	
Waypoint 1	Next waypoint: 50.0 km Traveled: 125.7 km Remaining: 50.0 km				
	at (km)	take	for	total (km)	
	1 34.5	R595	34.5	34.5	
	2 34.5	TS	15.5	50.0	
End	Traveled: 175.7 km				

You may also share the itinerary you have created by clicking “Share”.



Various options are available to you.

Share itinerary and map

Send your itinerary and your map settings (zoom, position, selected icons) by one of the ways below.



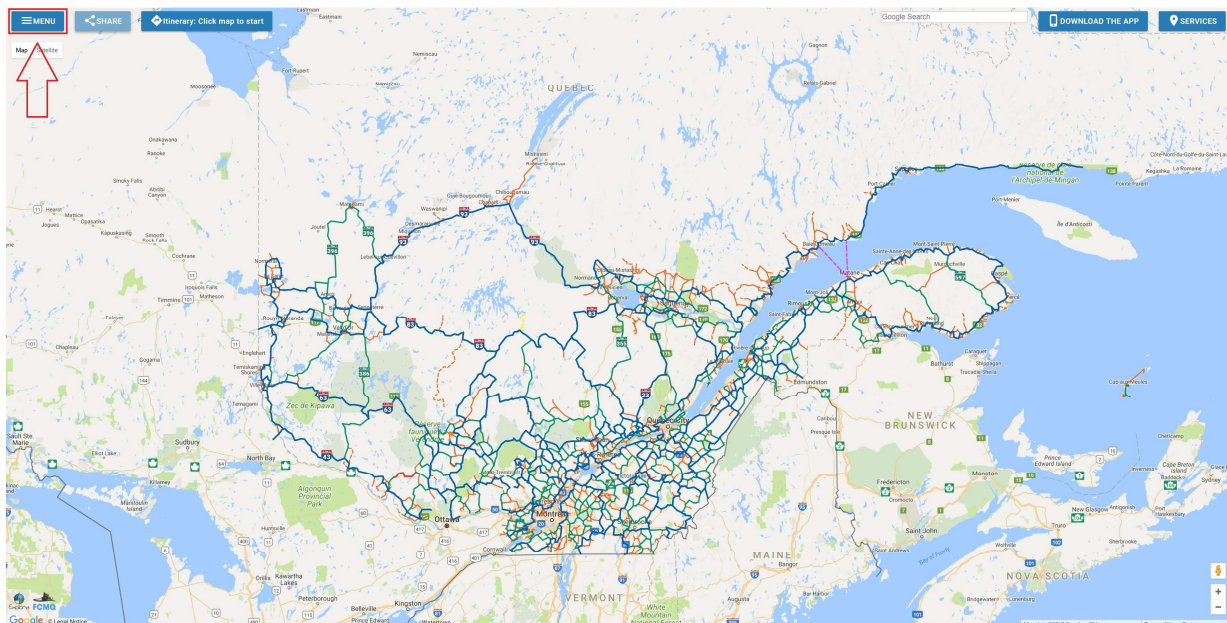
Copy the URL in the clipboard to paste it elsewhere.

Open a web page with the full URL. Useful to save in a bookmark!

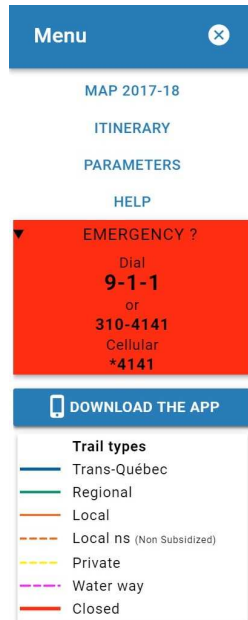


6) The « Menu »

In the « **Menu** », you have access to other information.



You have access to a legend of the type of snowmobile trails, a help, the parameters, the emergency numbers and the information of the itinerary that you have created and « Map 2017-18 » returns you to the general map.



HAPPY TRAILS!



FCMQ

LA FÉDÉRATION DES CLUBS DE
MOTONEIGISTES DU QUÉBEC